

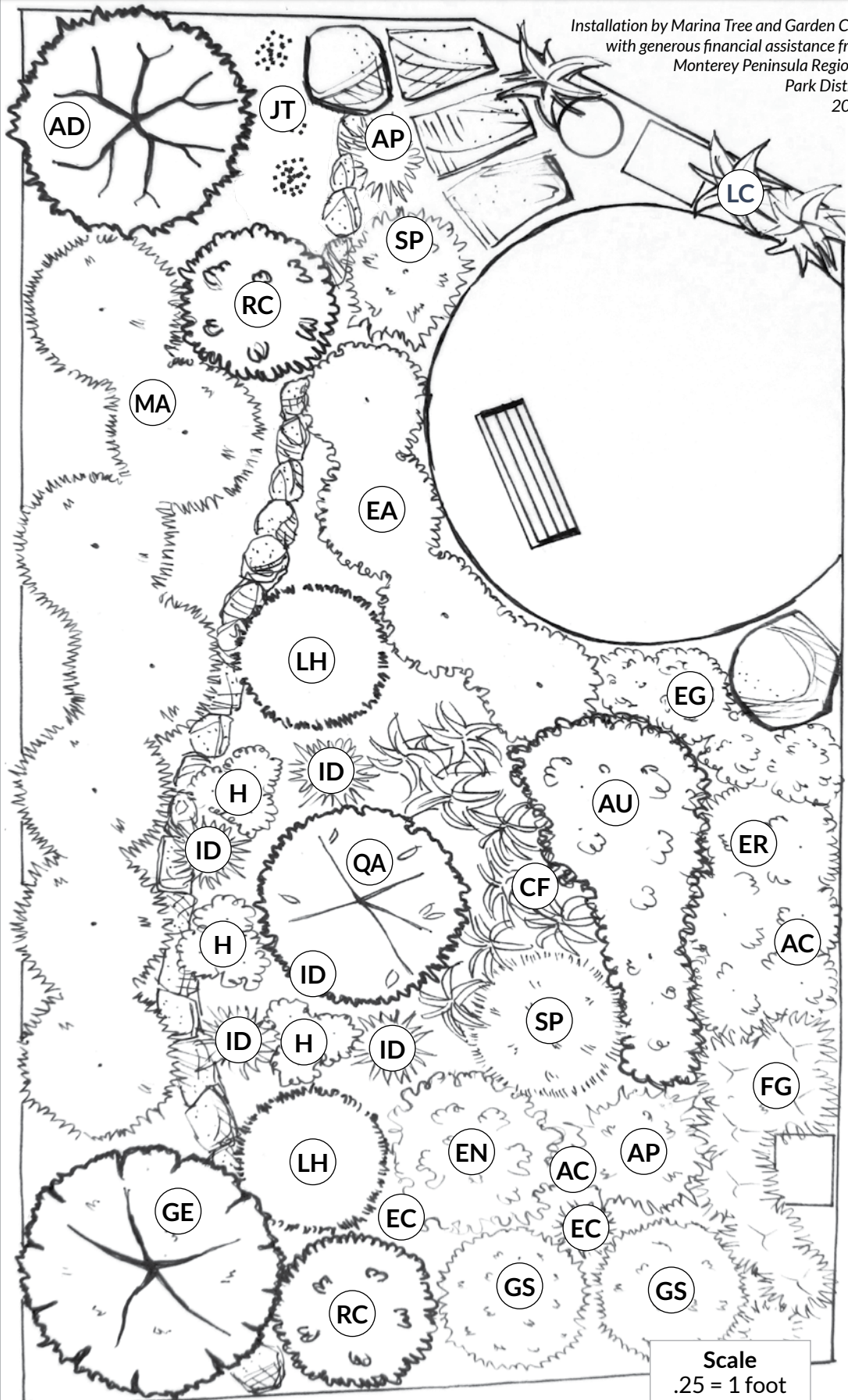
Installation by Marina Tree and Garden Club
with generous financial assistance from
Monterey Peninsula Regional
Park District
2017

PLANT KEY

- AC *Achillea millefolium californica*
- AD *Arctostaphylos 'Dr Hurd'*
- AU *Arctostaphylos uva ursi*
- AP *Artemesia pycnocephala 'David's Choice'*
- CF *Calamagrostis foliosa*
- EC *Epilobium canum 'Catalina'*
- EG *Erigeron glaucus 'Seabreeze'*
- EA *Eriogonum arborescens*
- ER *Eriogonum grande var. rubescens*
- EN *Eriophyllum nevinii 'Canyon Silver'*
- FC *Festuca californica*
- GS *Galvesia speciosa*
- GE *Garrya elliptica*
- H *Heuchera maxima*
- ID *Iris douglasiana*
- JT *Juncus tenuis 'Blue Dart'*
- LH *Lepchinia hastata*
- LC *Leymus condensatus 'Canyon Prince'*
- MA *Mahonia aquifolium*
- RC *Rhamnus californica*
- SP *Salvia 'Poza Blue'*
- QA *Quercus agrifolia*

Design by:

*Juli Hofmann &
Grace Silva-Santella
marinatreeandgarden.org*



Scale
.25 = 1 foot